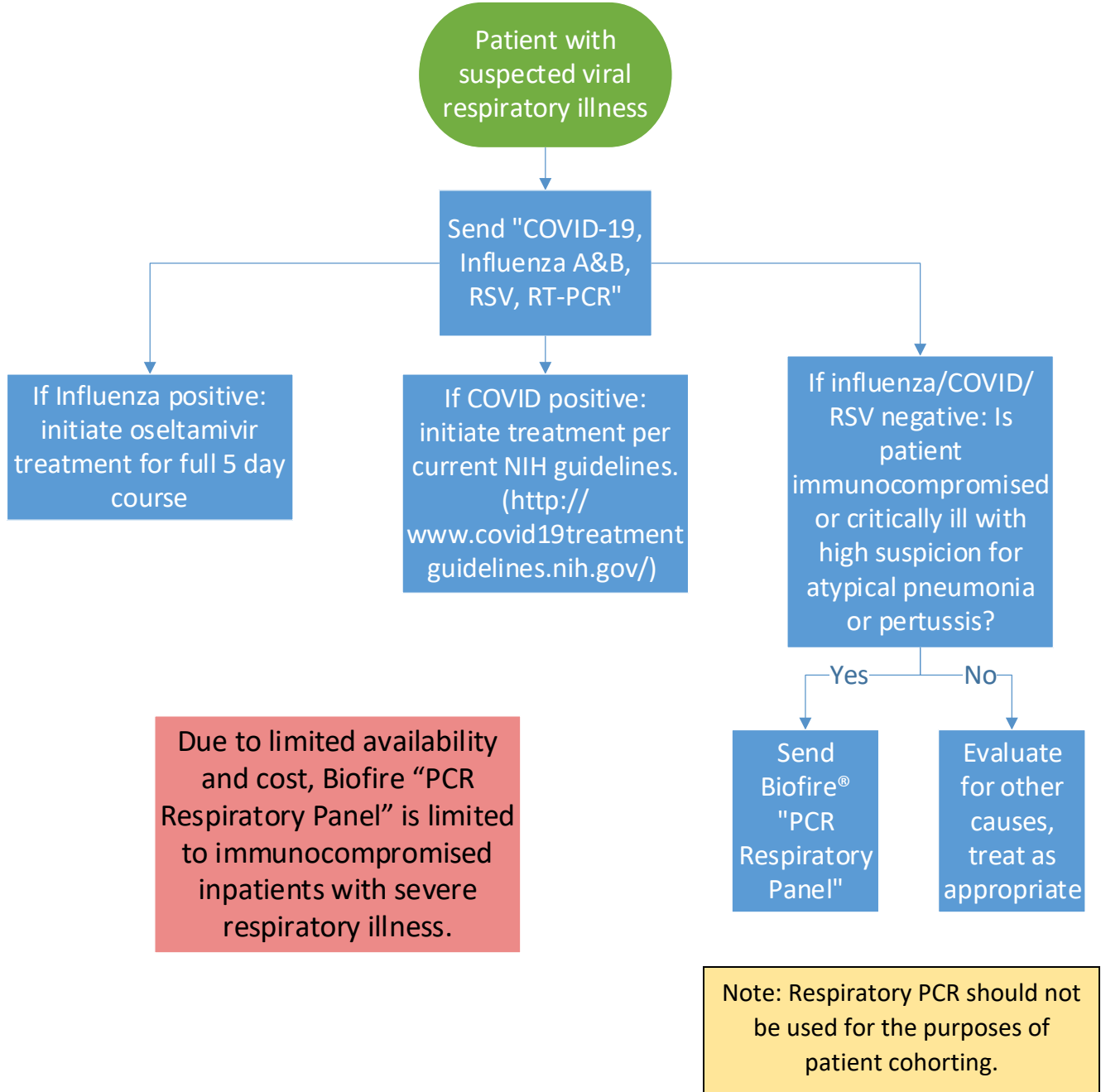


ANMC Adult/Pediatric Viral INPATIENT Testing Pathway

Created: 12/21/2022, Updated: 1/31/2024

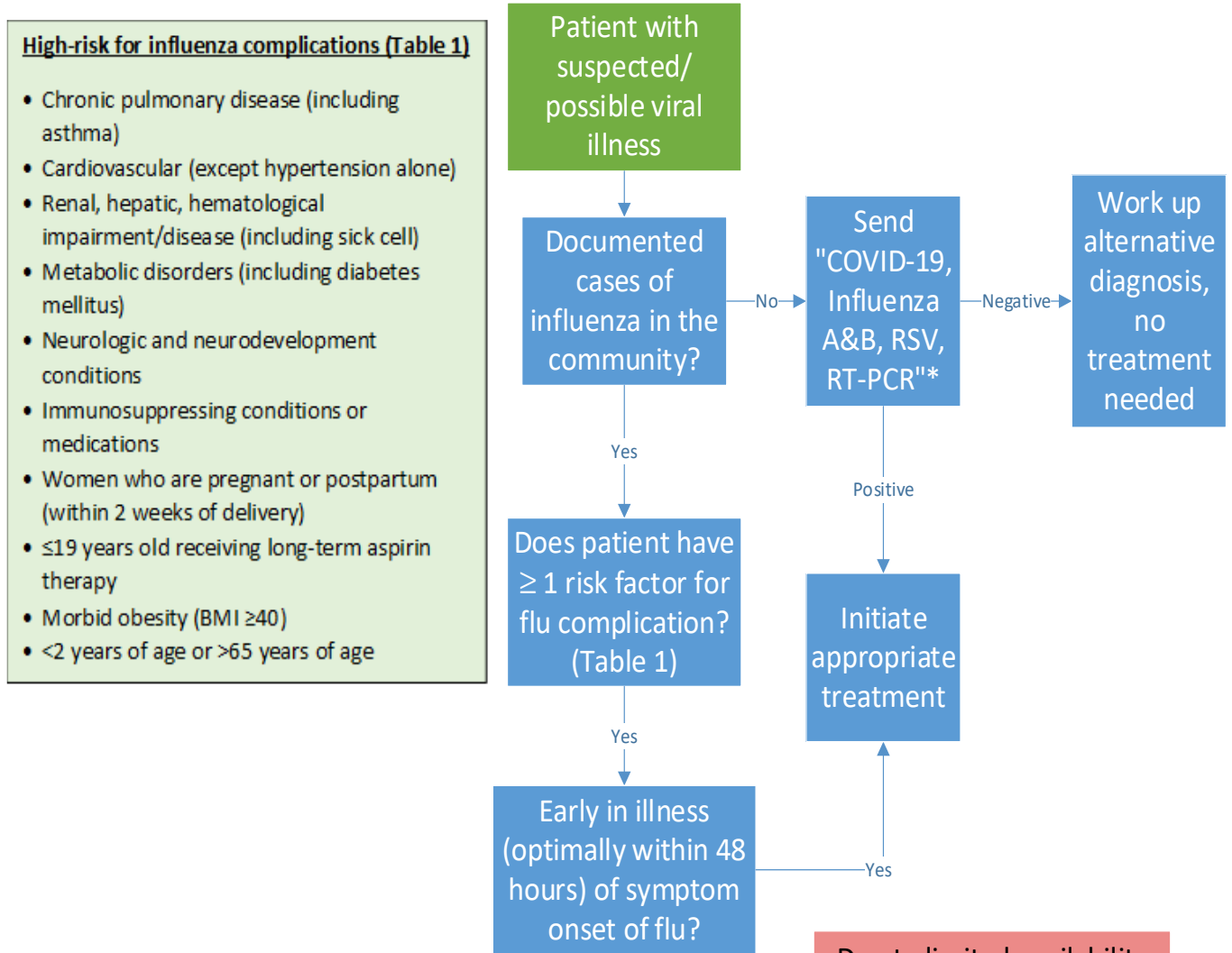


*Combined influenza/COVID testing may also include RSV as part of the testing components.

ANMC Adult/Pediatric OUTPATIENT (including Emergency Department patients not to be admitted)

Testing Pathway

Created: 12/21/2022, Updated: 1/31/2024



High-risk for influenza complications (Table 1)

- Chronic pulmonary disease (including asthma)
- Cardiovascular (except hypertension alone)
- Renal, hepatic, hematological impairment/disease (including sick cell)
- Metabolic disorders (including diabetes mellitus)
- Neurologic and neurodevelopment conditions
- Immunosuppressing conditions or medications
- Women who are pregnant or postpartum (within 2 weeks of delivery)
- ≤19 years old receiving long-term aspirin therapy
- Morbid obesity (BMI ≥40)
- <2 years of age or >65 years of age

*Combined influenza/COVID testing may also include RSV as part of the testing components.

Due to limited availability and cost, Biofire "PCR Respiratory Panel" is limited to immunocompromised inpatients with severe respiratory illness.