

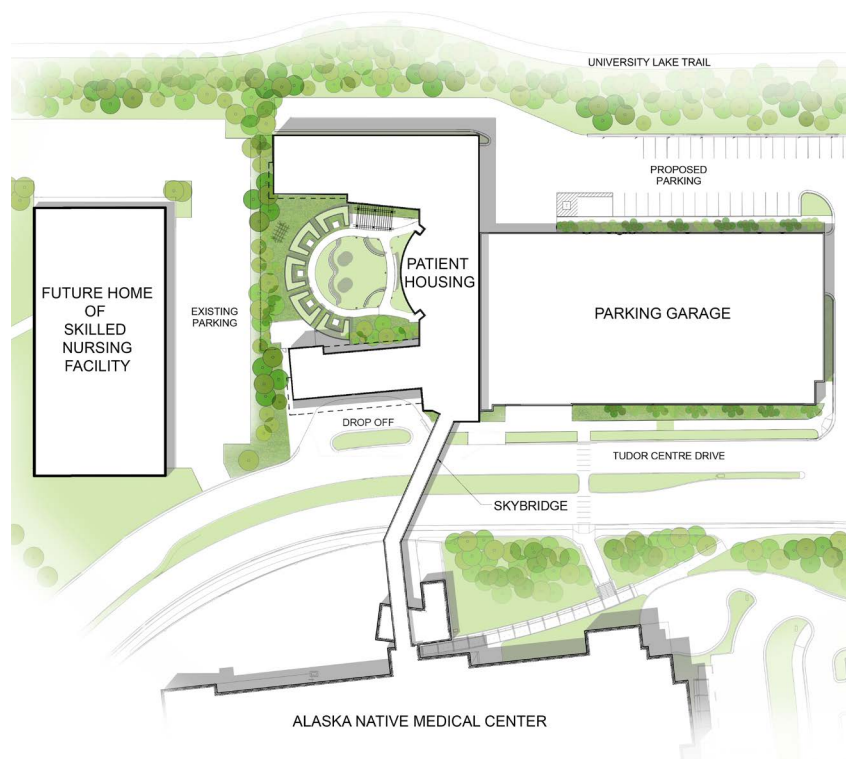


# ACCESS TO CARE

Expanding lodging for patients at the Alaska Native Medical Center



**ALASKA NATIVE  
TRIBAL HEALTH  
CONSORTIUM**



More than half of Alaska Native Medical Center patients travel from outside Anchorage to access a broad variety of health services. ANTHC is committed to ensuring that a lack of housing does not impact those seeking care.

We are pleased to announce that a new patient housing facility will open in fall 2016. Our priorities are expanding services and support for our people who need care and providing a “home away from home” environment that encourages rest and recovery before they return home.



Rendering by KPB ARCHITECTS © 2015



Rendering by KPB ARCHITECTS © 2015

Our Vision: Alaska Native people are the healthiest people in the world.



Rendering by KPB ARCHITECTS © 2015



## Facility Amenities

- 202 rooms on six floors, including designated floor for families
- Direct connection to ANMC hospital by sky bridge
- Gathering areas, separate dining and communal kitchens, and business center
- Healthy activities, including nearby walking trails and courtyard garden
- A restful environment for healing and recovery
- Adjacent parking structure with handicap parking

## ANMC patients benefit from:

- **Increased capacity:** 202 private rooms to serve patients and families
- **Better access:** Patient lodging will be located on campus and will provide direct access to the hospital for Elders, expectant mothers, and our other guests.
- **Increased care for new families:** For patients with high-risk pregnancies traveling from other regions, ANMC is a home away from home. These expectant families must come to Anchorage for the last 4-6 weeks of the mother's pregnancy so they have immediate access to their hospital care. This new housing facility will ensure a convenient and nurturing experience for the whole family.
- **Expanded opportunity:** This new housing provides another positive step on the care continuum for ANMC patients.



Rendering by KPB ARCHITECTS © 2015



Rendering by KPB ARCHITECTS © 2015



## ANMC by the numbers

**147,000** Alaska Native people are served at ANMC

**545** patients stay at Quiana House every month

**120** oncology patients stay at Quiana House every month

**6 days:** average length of stay at Quiana House

**472** patients referred to private hotels per year due to lack of available housing

**5 days:** average length of stay at local hotels

**6,982:** number of inpatient admissions per year

**1,633** babies are born every year

**296,295** outpatient appointments every year

**57,417** Emergency Department visits every year

**14,784** surgical procedures performed every year

### Alaska Native Tribal Health Consortium

4000 Ambassador Drive, Anchorage, Alaska 99508 • T: (907) 729-1900 • F: (907) 729-1901 • [anthc.org](http://anthc.org)

*The Alaska Native Tribal Health Consortium and Southcentral Foundation jointly own and manage ANMC under the terms of Public Law 105-83. These parent organizations have established a Joint Operating Board to ensure unified operation of health services provided by the Medical Center.*