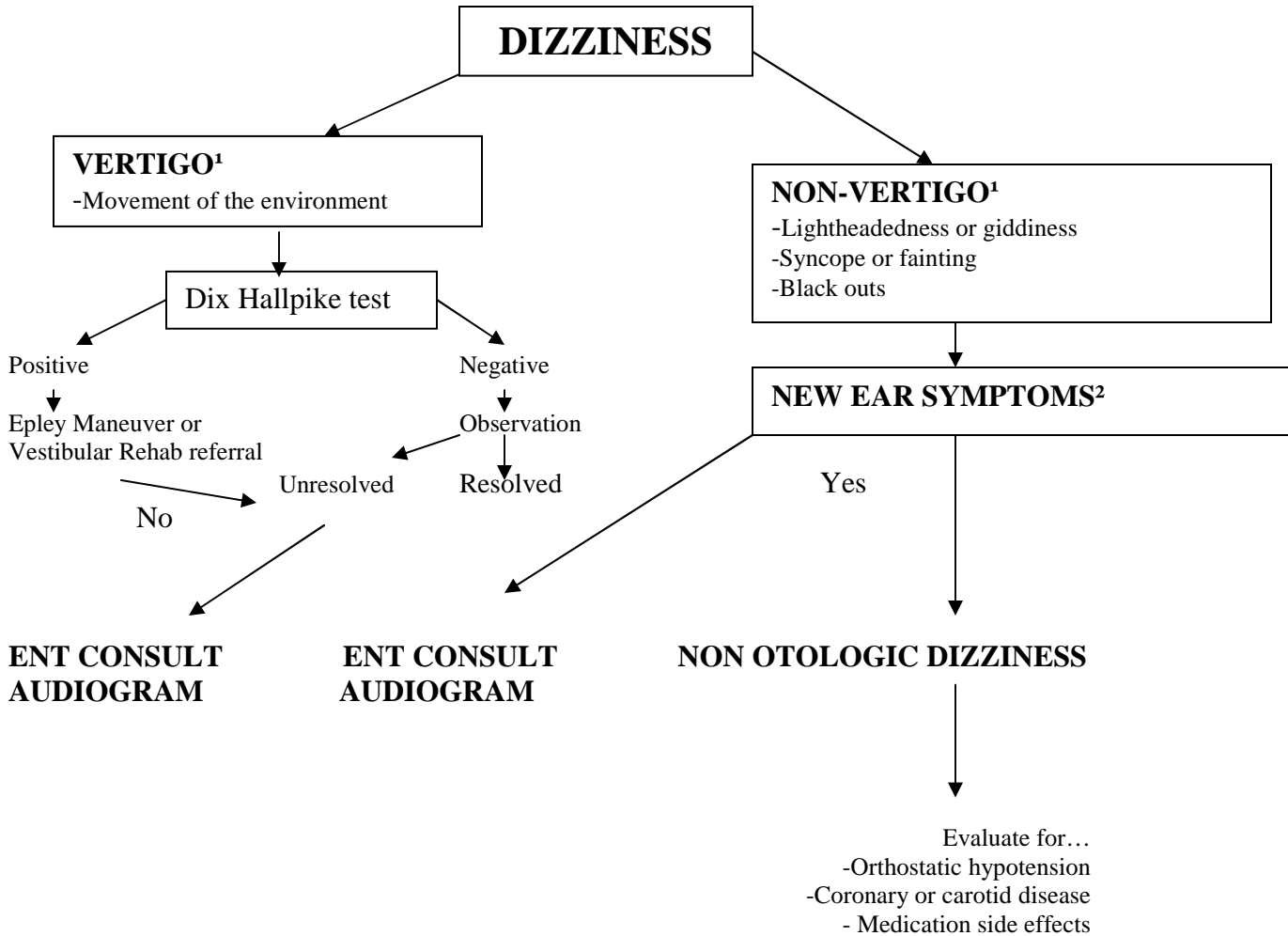


CLINICAL GUIDELINE FOR DIZZINESS

Define the symptom without using the term “dizziness” as it is a vague complaint that can mean lightheadedness, imbalance, syncope, vertigo, or a host of other things to an individual patient.



Vertigo¹ refers to the sensation of movement, spinning or lurching. These patients have vertigo and should be referred to ENT.

New Ear Symptoms² include a change in hearing, asymmetrical hearing loss, deafness, tinnitus, ear fullness/pressure, ear pain, or Ear drainage within the last 60 days associated with the onset of the dizzy complaint.

Observation³ vertigo not associated with sudden hearing loss or recent traumatic event may be observed up to 4 weeks prior to referral.

PIC approved at the 9/7/06