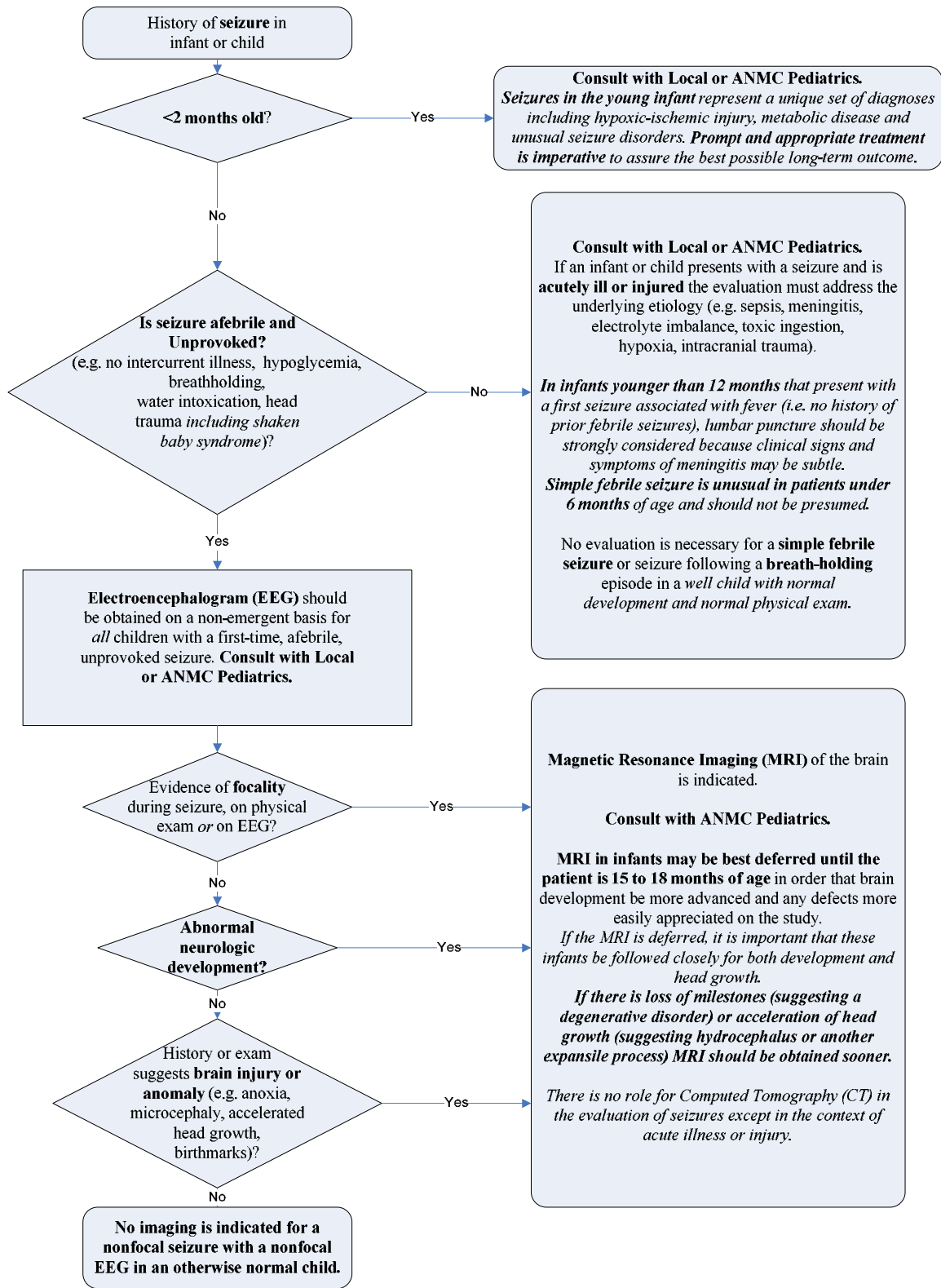


Guideline for Evaluation of Afebrile Seizures in Infants and Children



References:
 Neurology, 2000 Sep 12, 55(5):616-23.
 Pediatrics, 1996 May, 97(5):769-772.
 Pub Types: Guidelines; Journal Articles; Practice Guidelines

This guideline is designed for general use for most patients but may need to be adapted to meet the special needs of a specific patient as determined by the patient's provider.