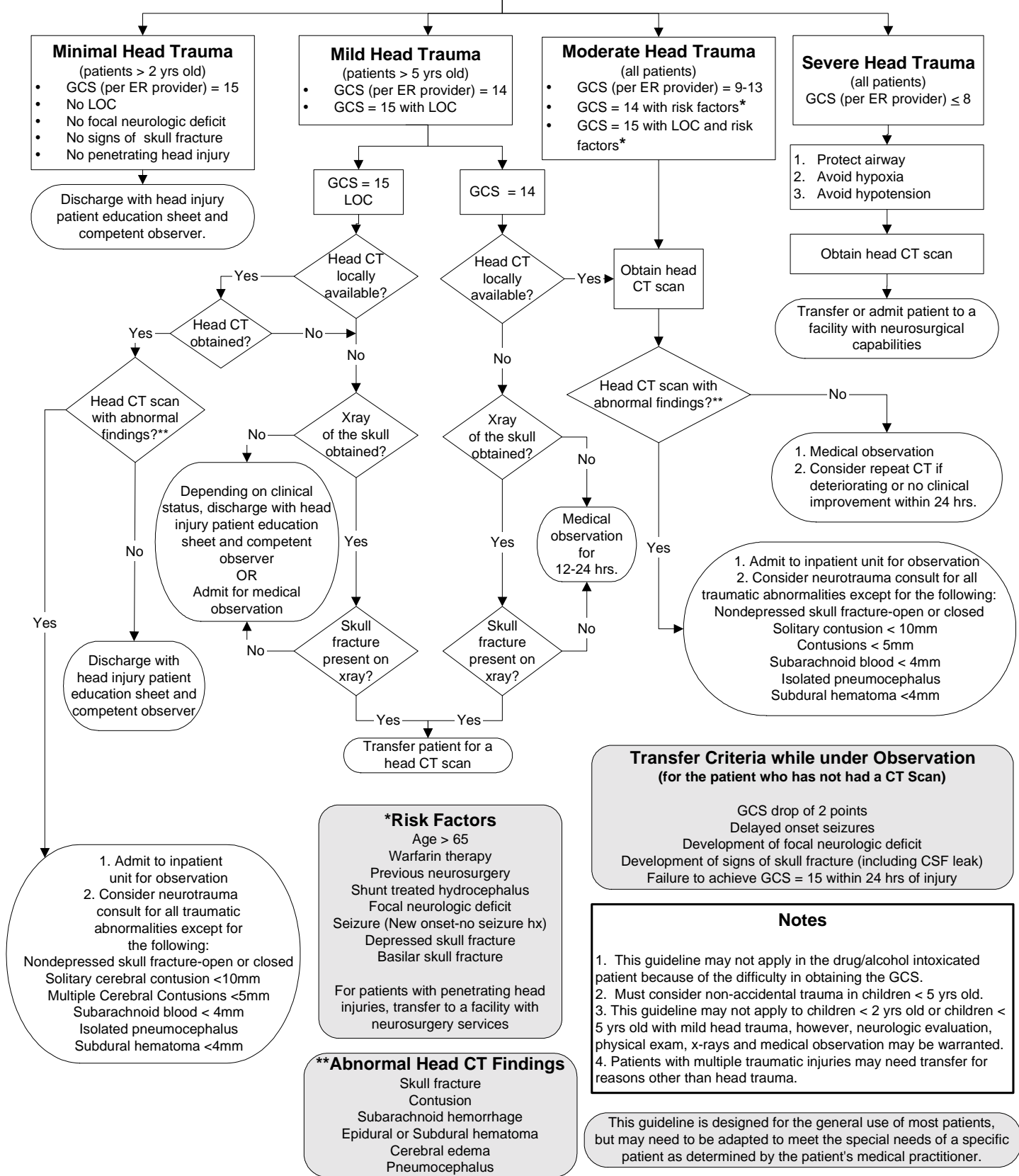


# Management of Acute Head Trauma in Remote and Rural Locations: Alaska State Guideline

5/6/03

Patient presents with head trauma within 24 hours of injury



## Transfer Criteria while under Observation (for the patient who has not had a CT Scan)

- GCS drop of 2 points
- Delayed onset seizures
- Development of focal neurologic deficit
- Development of signs of skull fracture (including CSF leak)
- Failure to achieve GCS = 15 within 24 hrs of injury

## Notes

- This guideline may not apply in the drug/alcohol intoxicated patient because of the difficulty in obtaining the GCS.
- Must consider non-accidental trauma in children < 5 yrs old.
- This guideline may not apply to children < 2 yrs old or children < 5 yrs old with mild head trauma, however, neurologic evaluation, physical exam, x-rays and medical observation may be warranted.
- Patients with multiple traumatic injuries may need transfer for reasons other than head trauma.

This guideline is designed for the general use of most patients, but may need to be adapted to meet the special needs of a specific patient as determined by the patient's medical practitioner.