



Rendering by KPBB ARCHITECTS © 2015



**ALASKA NATIVE  
TRIBAL HEALTH  
CONSORTIUM**

## Building Better Access: Patient housing

The patient housing facility will be a home away from home for patients traveling to receive care at the Alaska Native Medical Center. Ensuring convenient and available lodging reduces the travel barriers to care and health care system costs, and increases access to the quality care that will advance our vision that Alaska Native people are the healthiest people in the world.

### Patient housing benefits

- Increased on-campus lodging capacity
- Improved access to care
- Culturally appropriate healing environment
- Significantly reduced in-town travel and logistics
- Reduced lodging costs for payers

### Housing profile

- Opens early 2017
- 202 rooms
- Dedicated 36-room floor for expectant mothers and families
- Sky bridge access to ANMC and parking garage
- Communal living and cooking areas
- New dining facility
- Exercise room and access to walking trails
- Self-serve laundry facilities
- New staff positions in security, housekeeping, reception

### Patient population profile

Enhanced service for patients with higher degrees of care: expectant mothers with high-risk pregnancies; cancer patients requiring infusion and radiation therapy; patients needing outpatient specialty medical care; and children and Elders who are receiving care.

- More than 50 percent of ANMC patients travel to Anchorage for care
- 472 patients referred to outside hotels
- 545 monthly Quyana House guests
- 120 monthly oncology patients
- 800 expectant mothers and families from outside Anchorage service area
- 5,000 annual post-surgical care patients from outside Anchorage service area

**Construction duration:** Expected completion Fall 2016  
**Project construction:** Neeser Construction, Inc.  
**Project design:** KPBB Architects

*Learn more about the patient housing project at [www.anmc.org/new-anmc-patient-housing](http://www.anmc.org/new-anmc-patient-housing).*

## Project Timeline

### June 2013

AK Senate bill 88 approved for bond sale funding

### January 2014

President Obama signs ANTHC Land Transfer Act, giving ANTHC the land on the Alaska Native Health Campus for the future site of the ANMC Patient Housing facility

### Summer 2014

Construction begins on new 440-stall, multi-floor ANMC hospital parking garage next to the site of the ANMC Patient Housing facility

### August-September 2014

The State of Alaska successfully sells Certificates of Participation to individual investors so it can provide \$35 million in funding to ANTHC to build the ANMC Patient Housing facility

### October 2014

ANMC Patient Housing design complete

### February 2015

Construction services awarded to Neeser Construction, Inc.

### May 2015

Building groundbreaking

### July 2015

Building foundation work completion; completion date of parking garage

### November 2015

Steel and roofing work completion

### Winter 2015-16

Interior work

### Spring 2016

Sky bridge construction begins

### Early 2017

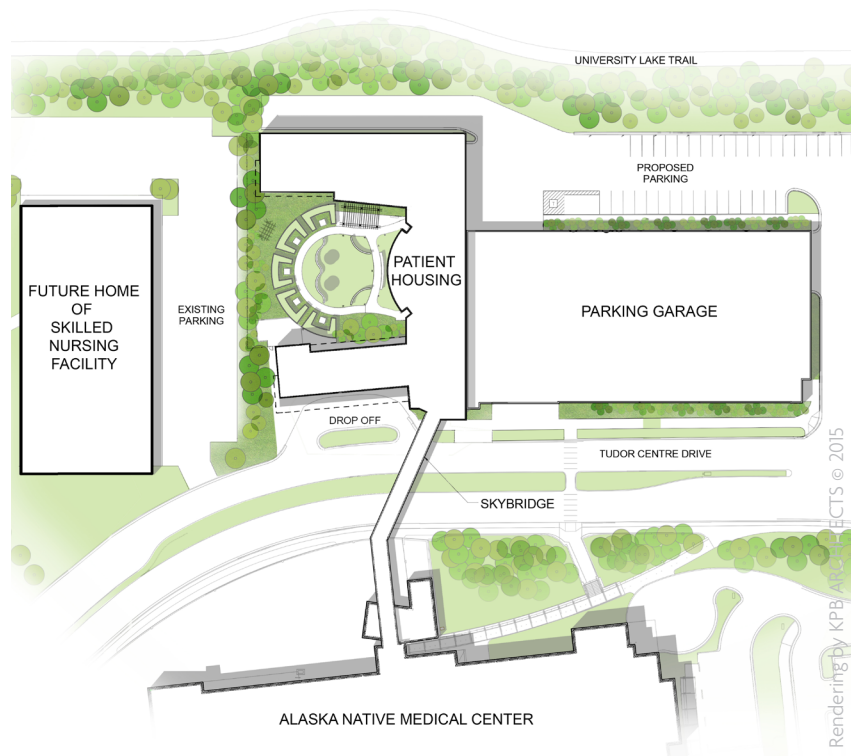
Estimated building completion and occupancy



Common dining area



Maternal Family Services living room



Project location/redeveloped campus