



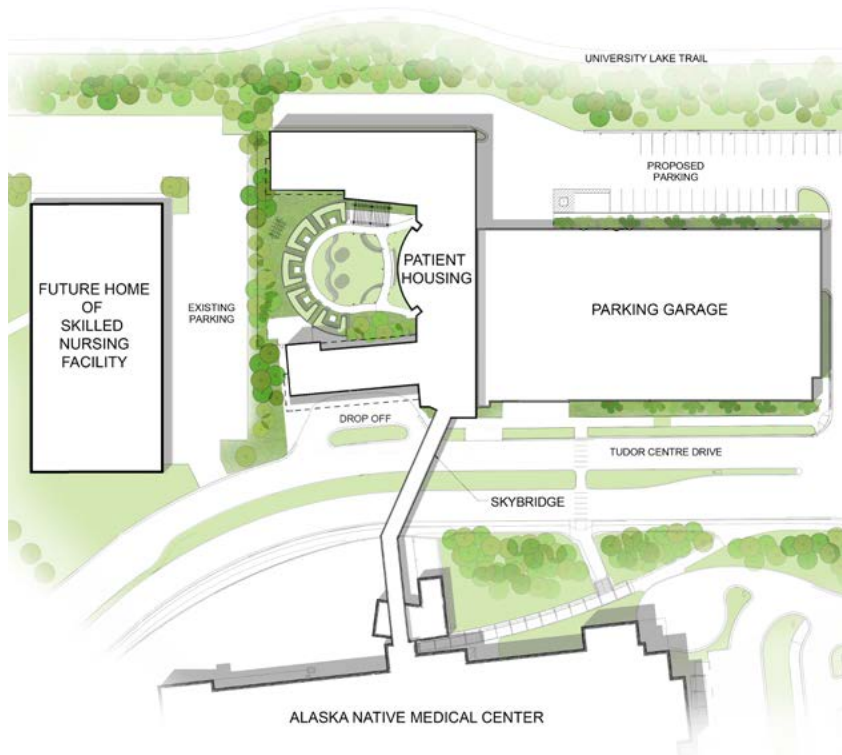
Rendering by KPB ARCHITECTS © 2015

ACCESS TO CARE

Expanding lodging for patients of the Alaska Native Medical Center



ALASKA NATIVE
TRIBAL HEALTH
CONSORTIUM



More than half of Alaska Native Medical Center patients travel from outside Anchorage to access a broad variety of health services. ANTHC is committed to ensuring that a lack of housing does not impact those seeking care.

We are pleased to announce that a new patient housing facility will open in fall 2016. Our priorities are expanding services and support for our people who need care and providing a “home away from home” environment that encourages rest and recovery before they return home.



Rendering by KPBB ARCHITECTS © 2015



Rendering by KPBB ARCHITECTS © 2015

Our Vision: Alaska Native people are the healthiest people in the world.



Rendering by KPBB ARCHITECTS © 2015

Facility Amenities

- 202 rooms on six floors, including designated floor for families
- Direct connection to ANMC hospital by sky bridge
- Gathering areas, separate dining and communal kitchens, and business center
- Healthy activities, including nearby walking trails and courtyard garden
- A restful environment for healing and recovery
- Adjacent parking structure with handicap parking



ANMC patients benefit from:

- **Increased capacity:** 202 private rooms to serve patients and families
- **Better access:** Patient lodging will be located on campus and will provide direct access to the hospital for Elders, expectant mothers, and our other guests.
- **Increased care for new families:** For patients with high-risk pregnancies traveling from other regions, ANMC is a home away from home. These expectant families must come to Anchorage for the last 4-6 weeks of the mother's pregnancy so they have immediate access to their hospital care. This new housing facility will ensure a convenient and nurturing experience for the whole family.
- **Expanded opportunity:** This new housing provides another positive step on the care continuum for ANMC patients.



Rendering by KPB ARCHITECTS © 2015



Rendering by KPB ARCHITECTS © 2015



ANMC by the numbers

147,000 Alaska Native people are served at ANMC
 545 patients stay at Quyana House every month
 120 oncology patients stay at Quyana House every month
 6 days: average length of stay at Quyana House
 472 patients referred to private hotels per year due to lack of available housing

5 days: average length of stay at local hotels
 6,982: number of inpatient admissions per year
 1,633 babies are born every year
 296,295 outpatient appointments every year
 57,417 Emergency Department visits every year
 14,784 surgical procedures performed every year



The Healthy Alaska Natives Foundation invites our important community partners to join us in supporting this innovative and exciting project benefiting Alaskans.

For more information, visit inspiringgoodhealth.org or call (907) 729-5652.



ALASKA NATIVE TRIBAL HEALTH CONSORTIUM

4000 Ambassador Drive, Anchorage, Alaska 99508
 (907) 729-1900 • anthc.org

The Alaska Native Tribal Health Consortium and Southcentral Foundation jointly own and manage ANMC under the terms of Public Law 105-83. These parent organizations have established a Joint Operating Board to ensure unified operation of health services provided by the Medical Center.